



February 2019

## Felixstowe Partnership Funded PCSO Report

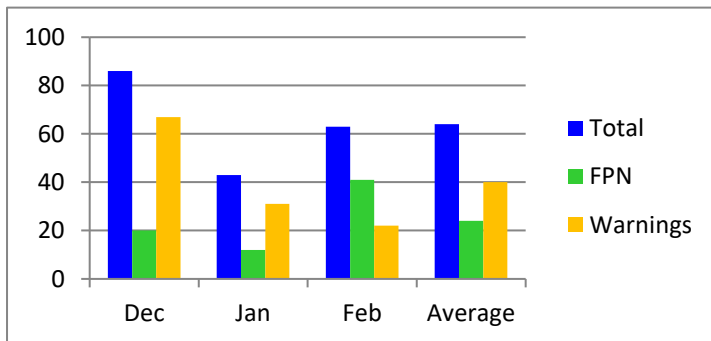
### Contents

- Parking
- Schools
- ASB
- Homelessness
- Emerging Issues and Priorities

### Parking

A zero tolerance approach has been adopted this month to deal with parking within the town centre. This has resulted in a 241% increase in the number of fixed penalty notices issued compared with last month and 29% less warnings being issued. Half of all the offences recorded were in Hamilton Road and 60% of those were vehicle parked outside of the signed bays or between Bank Corner and Bent Hill. The remaining were vehicles which parked in the disabled/loading bays without a badge displayed.

Members of the public have suggested and commented on roads which are suffering from parking problems. Some of these roads are residential and do not have junction protection such as yellow lines. In response to this during patrols, roads such as Manning, Cavendish, Russell, Holland and Granville Road have all been subject to parking enforcement in addition to other minor roads. The narrow roads are difficult to navigate with parked cars on either side, which is made worse by vehicles parking too close to junctions.



Early in the month letters were sent to schools outlining the specific parking restrictions for each school. This appears to have proved generally effective and on the whole parking around schools appears to have improved. There are still some parents and guardians who think it is acceptable to park on the yellow zig-zag lines and in areas where restrictions are in place. The restrictions are in place to ensure the safety of children, parents and guardians during drop off and pick up times.

We have received contact from members of the public and parents regarding some drivers who ignore the rules and those drivers have been sent letters.

### ASB

ASB has been low level this month with some small isolated problems during the half term which were dealt with at the time. The problems were mainly centred around the skate park and the seafront. The issues of drug use in the area of The Walk in Walton have reduced and no further reports have been received following proactive patrols in the area. Continued patrols and engagement in known problems areas should see a reduction in ASB.

### Homelessness

The number of homeless in Felixstowe has reduced however we are aware of some people who are begging in the town centre. All known homeless persons have been offered support however they do not

***Making Suffolk a safer place to live, work, travel and invest***

always accept the help. If you are aware of any homeless persons we suggest contacting Streetlink on 03005000914 or through the website [www.streetlink.org.uk](http://www.streetlink.org.uk). If there is a person begging or asking for money we suggest that it is reported via 101 or through our website [www.suffolk.police.uk](http://www.suffolk.police.uk). If you feel the need to give we suggest giving food or drink in lieu of money. We work closely with Help Our Homeless which is a charity organisation based in Ipswich. You can donate to specifically help homeless people of Felixstowe either online or at various charity boxes around the town.

### **Emerging Issues and Priorities**

There have been a few complaints of vehicles parking across drop kerbs which means crossing the road and accessing the pavement is difficult for pedestrians and those that use mobility aids and prams. Any vehicles found blocking drop kerbs will be dealt with accordingly.